

INDICATION BY DESIGN

IDEAL MECHANICAL PERFORMANCE UNMATCHED SURGICAL CONVENIENCE UNIFORM HEALING

Atrium's latest innovation in soft tissue repair, **C-QUR™ Mesh V-Patch**, combines the clinically proven performance of ProLite™ polypropylene mesh with an all natural, pharmaceutical grade Omega 3 fatty acid (O3FA) bioabsorbable coating and advanced deployment technology. The V-Patch, with its exclusive absorbable O3FA-coated reinforcement washer, is designed for the repair of small hernias such as umbilical, epigastric and trocar site defects.

Through diligent research and experience with nearly 3 million surgical mesh implants worldwide, Atrium has discovered the importance of carefully balancing mechanical stability and durability with biocompatibility.

C-QUR™ V-Patch's "**Indication by Design**" approach empowers the surgeon to choose a product that offers unmatched surgical convenience, little to no learning curve, ideal anatomical conformance and a faster, more natural healing experience for the patient.

Ideal mechanical performance

The best-in-class design of the V-Patch allows surgeons to use a familiar and simple technique with an implant that opens and conforms effortlessly to the abdominal wall surface. C-QUR™ V-Patch's enhanced multilayered design provides vital mechanical support for the repair while utilizing our advanced O3FA technology to promote rapid healing and tissue incorporation.

C-QUR™ V-Patch consists of:

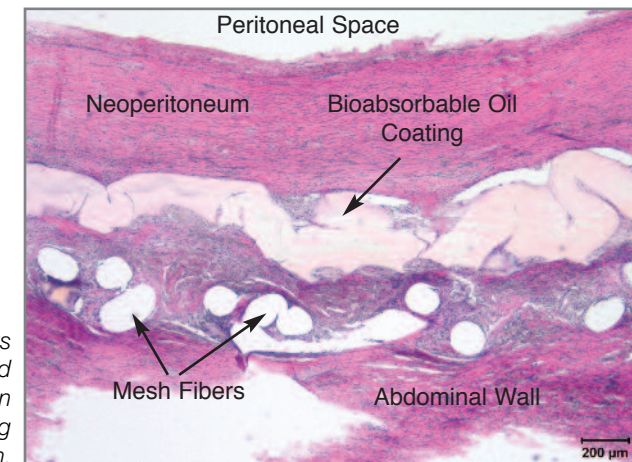
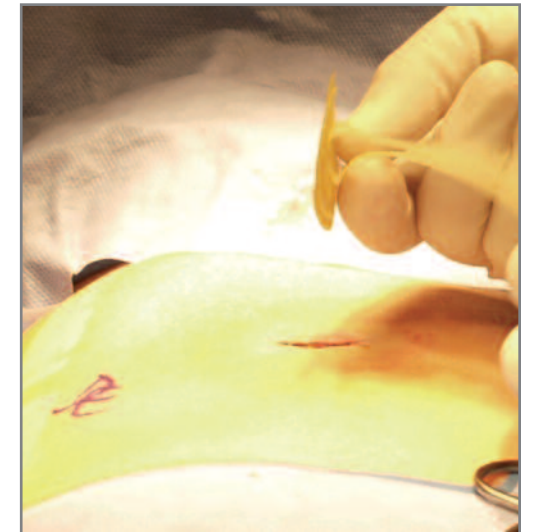
- One layer of **C-QUR™ Mesh** to promote more natural healing and minimize visceral tissue attachment
- The exclusive **O3FA-Coated Reinforcement Washer** allows for easy implantation of the device through a small defect. The unique design enables the implant to uniformly lay flat against the abdominal wall, and maintain a smooth contact surface for incorporation in and around the defect.
- The inner tissue-contacting layer has no pocket and helps promote faster, more uniform healing around the defect.
- Two non-distorting **Fixation Straps** provide uniform lift and conformability without the use of a pocket for positioning. The preferred C-QUR™ Mesh V-Patch fixation design helps secure the perimeter of the V-Patch tightly up against the abdominal wall, maximizing contact for uniform and complete incorporation.



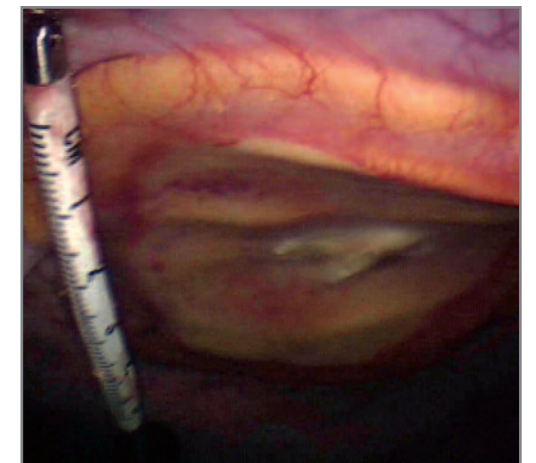
Advanced absorbable reinforcement technology provides unmatched implant fixation stability and uniformity with a preferred mechanical solution

In pre-clinical studies*, the C-QUR™ Mesh O3FA absorbable coating was observed to minimize the inflammatory response following blunt dissection. C-QUR™ exhibited **significantly less inflammatory** cell recruitment than uncoated polypropylene, resulting in a **fully incorporated**, well-anchored reinforcement to the abdominal wall, with little to no evidence of "uncontrolled" connective tissue scarring or visceral tissue attachment. Coupled with Atrium's exclusive absorbable deployment washer, Atrium's easy-to-use V-Patch has become the new standard for umbilical hernia repair.

As in all other C-QUR Mesh products, the O3FA coating covers each individual filament, helping to reduce foreign body reaction to the polymer structure. This allows for faster, healthier cell remodeling, permanently anchoring the mesh implant without aggressive scar formation. Less scarring results in a strong, flexible, healthy repair.



Histology shows complete and uniform incorporation of the mesh during coating absorption.



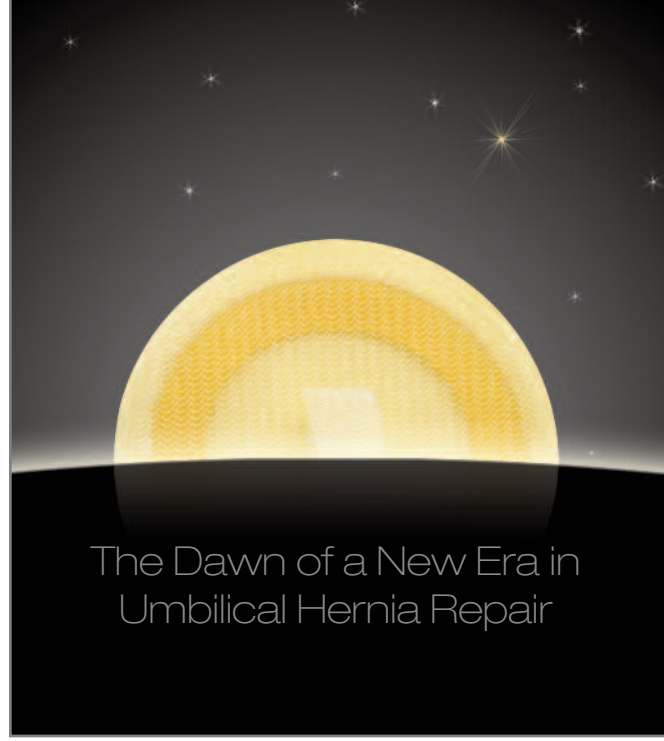


O3FA | Omega 3
BioAbsorbable Oil
Coating Technology

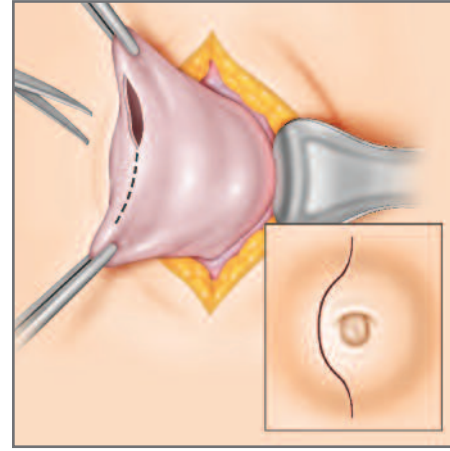


Uniformity = Faster, More
Flexible Deployment = Complete Anchoring

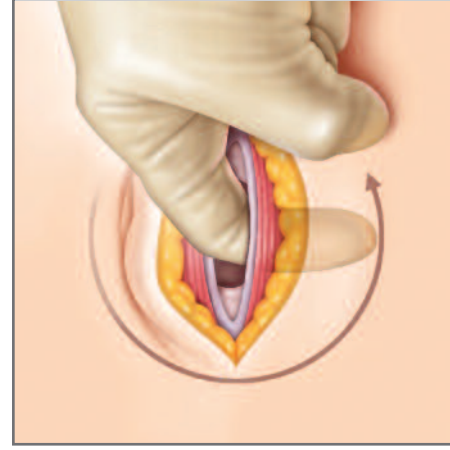
INDICATION BY DESIGN



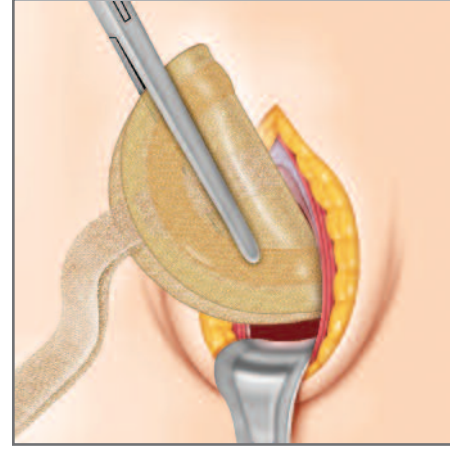
Umbilical Hernia Repair Using C-QUR™ V-Patch



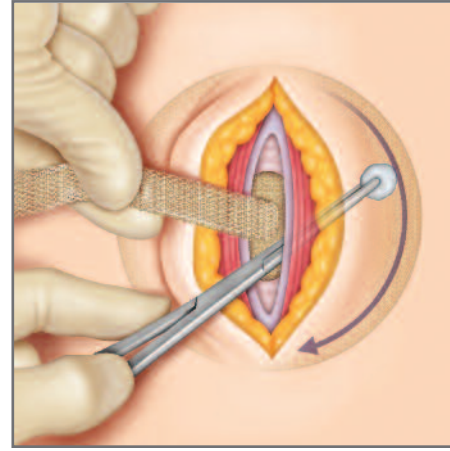
1. Make small incision over the hernia, dissect and divide out the hernia sac, and reduce its contents.



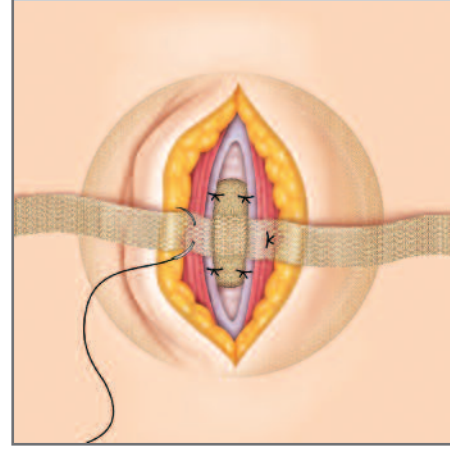
2. Clear space around the defect.



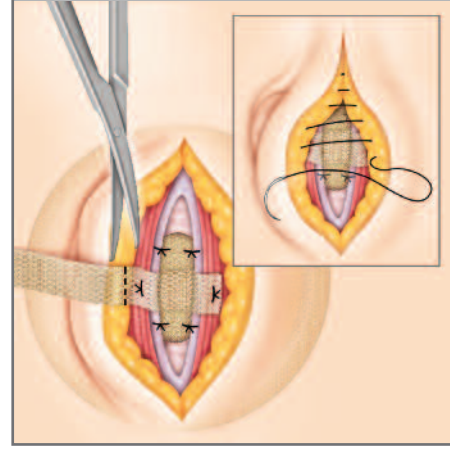
3. Fold patch with smooth side facing outward (straps folded in) and insert through defect.



4. Pull up on the Fixation Straps and sweep around the anterior portion of the V-Patch to ensure it is flush against the abdominal wall with no bulk tissue trapped between the device and the abdominal wall.

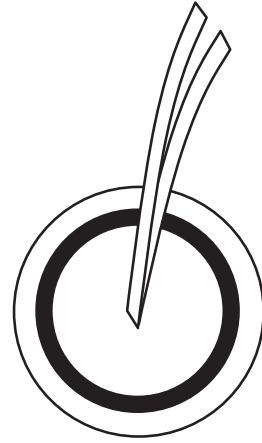


5. Keeping slight tension perpendicular to the device, suture the Fixation Straps and/or the anterior portion of the mesh to the margins of the defect.



6. Trim and remove the excess length of the Fixation Strap material after fixation and close the wound.

Shape > Square / Round



Qty.	Part No.	Cm	Inches	Qty.
—	31200	4.3 x 4.3	1.7 x 1.7	1 per package
—	31201	6.4 x 6.4	2.5 x 2.5	
—	31202	8.0 x 8.0	3.2 x 3.2	

Signature _____ Date _____

For Evaluation Date _____

For Conversion Date _____



ATRIUM



ATRIUM MEDICAL CORPORATION

5 Wentworth Drive
Hudson, New Hampshire 03051 U.S.A.
☎ 603-880-1433 📠 603-880-6718

ATRIUM EUROPE B.V.

Remdementsweg 20B
3641 SL Mijdrecht, The Netherlands
☎ +31-297-230-420 📠 +31-297-282-653

ATRIUM AUSTRALIA-PACIFIC RIM PTY. LTD.

Level 6, 579 Harris Street
Ultimo NSW 2007 Australia
☎ +61-2-8272-3100 📠 +61-2-8272-3199

© Atrium Medical Corporation 2009. All rights reserved. Printed in U.S.A. 9/09 Part #0251A
Atrium and C-QUR are trademarks of Atrium Medical Corporation.

www.atriummed.com